

HUS NR 2105

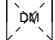
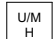
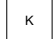

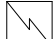


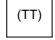
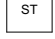
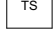
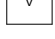
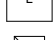


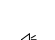

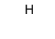
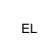
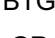
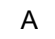
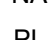

5 RoK, 125 m²
Tomtarea 646 m²

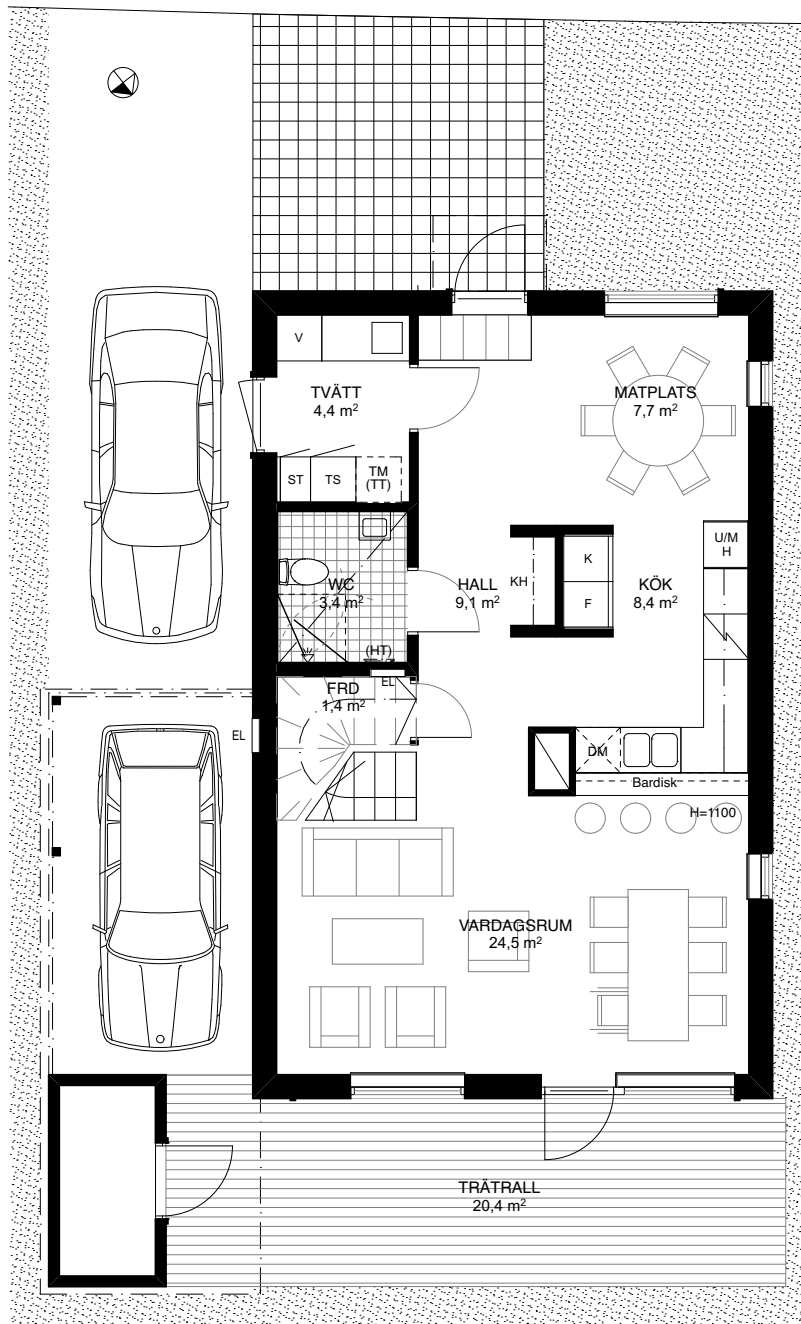
SANDSTUGAN
KV. TOPPSTUGAN 5-8, 14
BOTKYRKA KOMMUN



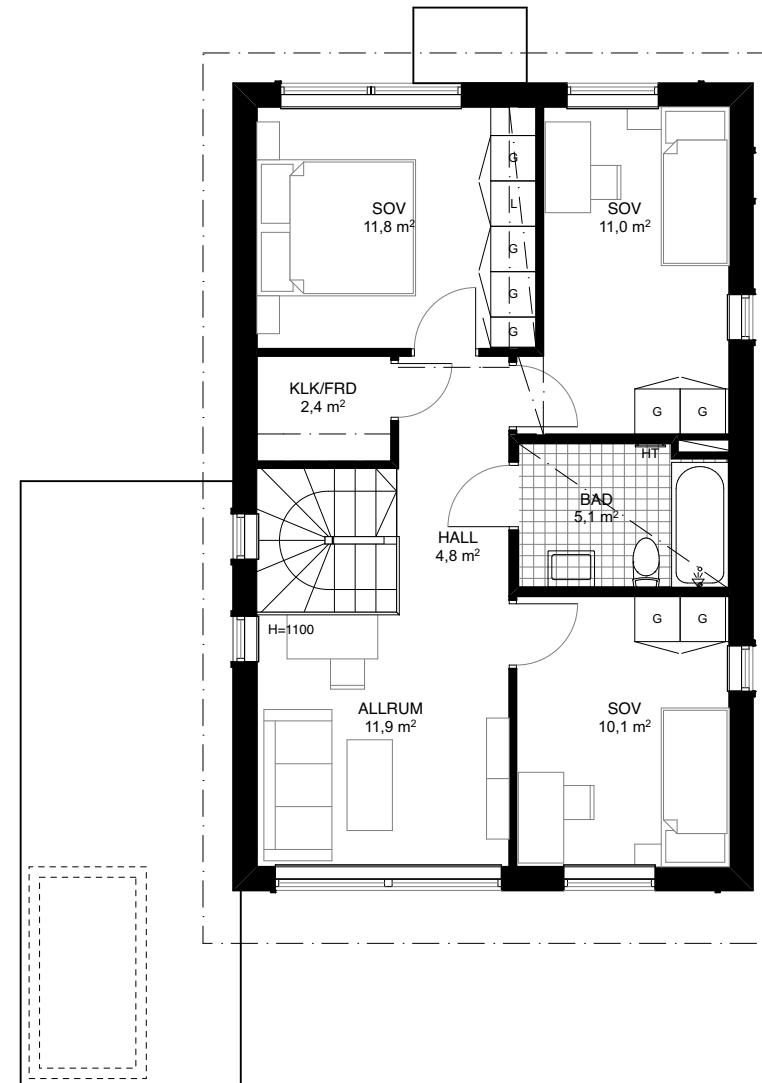
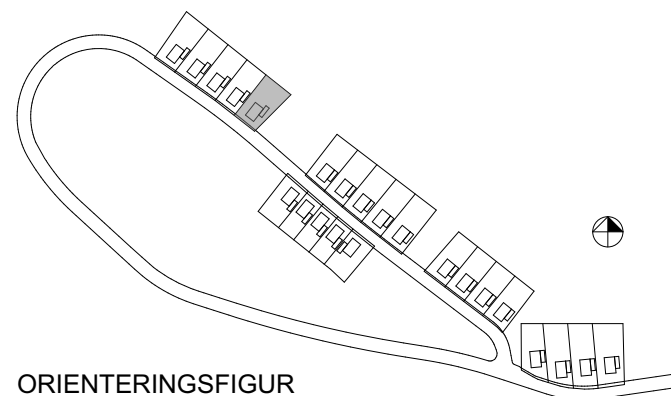
Byggnadsfirman
VIKTOR HANSON

Tomtgräns

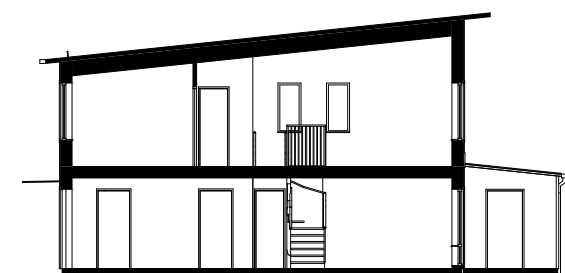
-  Diskmaskin
-  Högskåp med inbyggd ugn och mikro
-  Kylskåp
-  Frys
-  Spishäll
-  Garderob
-  Tvättmaskin
-  Förberett för torktumlare
-  Städsåp
-  Torkskåp
-  Varmvattenberedare
-  Linneskåp
-  Schakt
-  Undertak (Lägre rumshöjd)
-  Handdukstork
-  Förberett för handdukstork
-  Duschplats
-  Klädhängare
-  Klädskåp/förråd
-  Höjd
-  Förrådshylla med klädstång
-  El- och mediacentral
- BTG** Markbetongplattor
- GR** Gräsyta
- A** Asfaltsyta
- NA** Naturmark
- PL** Planteringsyta



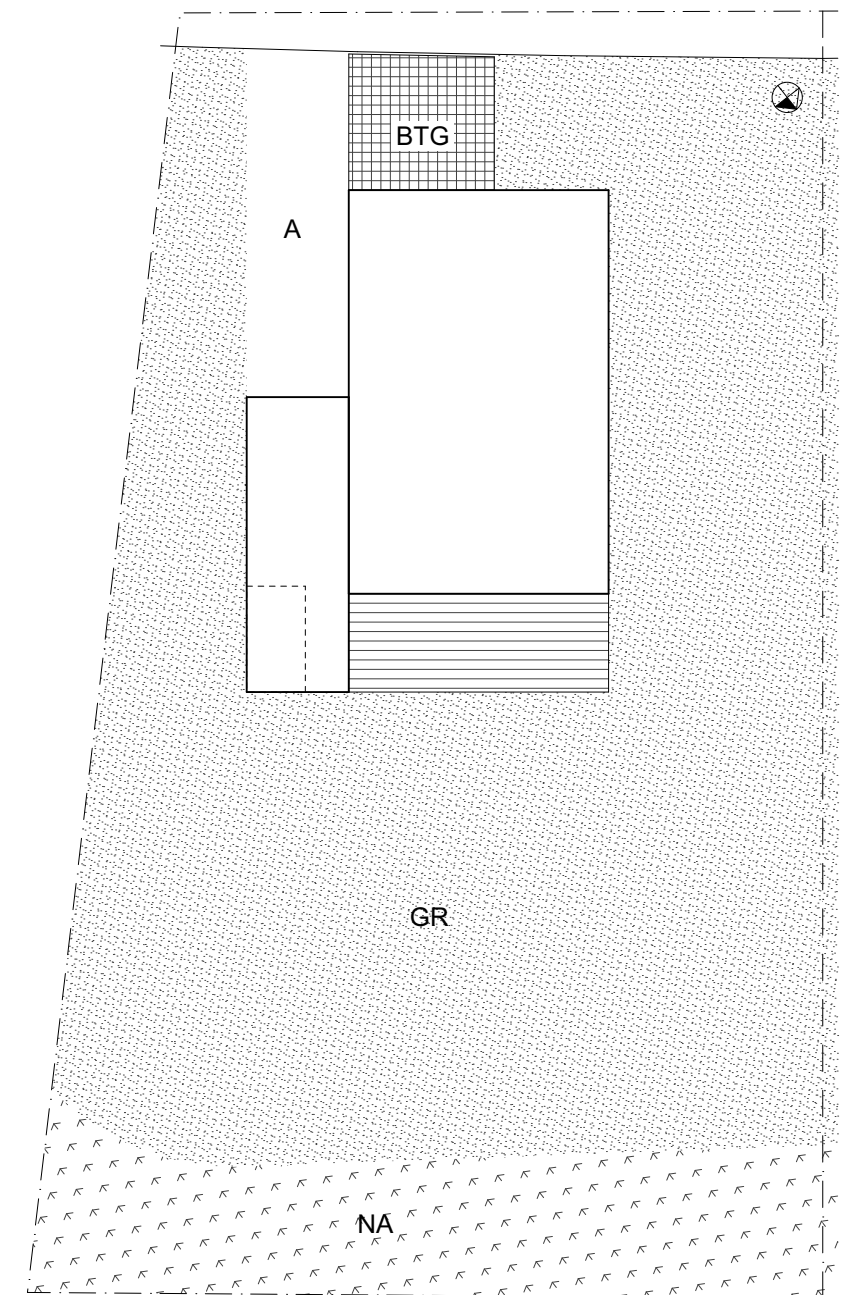
ENTRÉPLAN



ÖVRE PLAN



PRINCIPSEKTION



SITUATIONSPLAN

ARKITEKTER ENGSTRAND OCH SPEEK AB